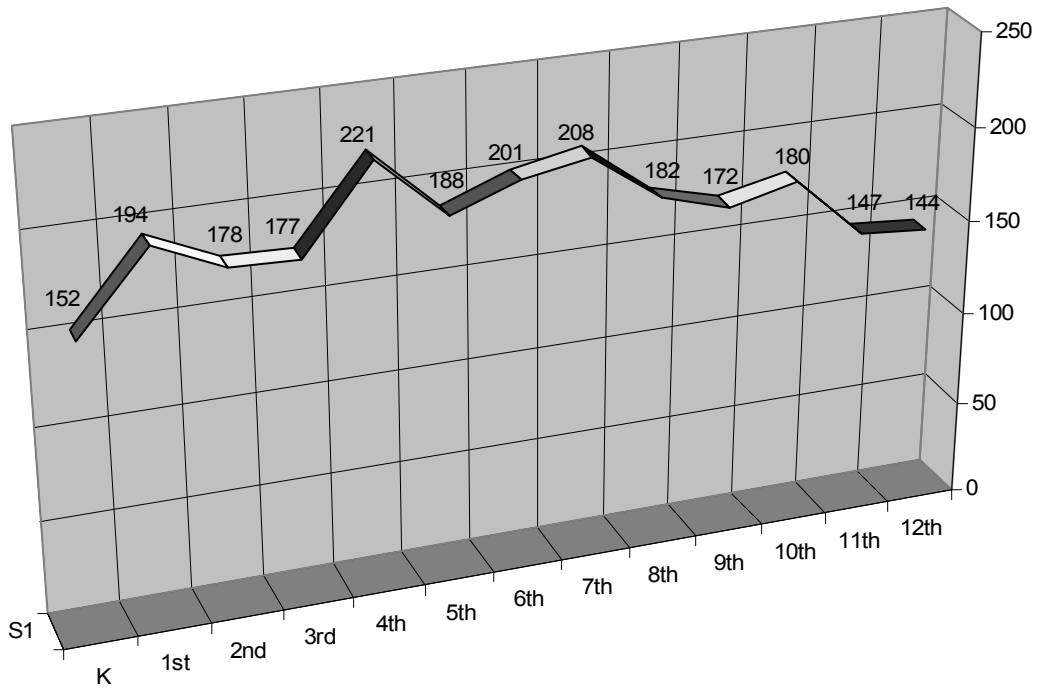


Current Enrollment by Grade as of Oct 15, 2003

The following chart shows enrollment per grade as it was officially reported by the district last fall. The numbers should not be misconstrued as accurate projections of high school graduation class sizes, however, because enrollment at every level tends to grow year-to-year. Several of the years in particular are subject to higher growth rates than others. For example, high increases are typical between Kindergarten and First Grade because many people send children to alternate Kindergarten programs. Similarly, large increases are common between 5th & 6th grades, as well as 8th & 9th grades.

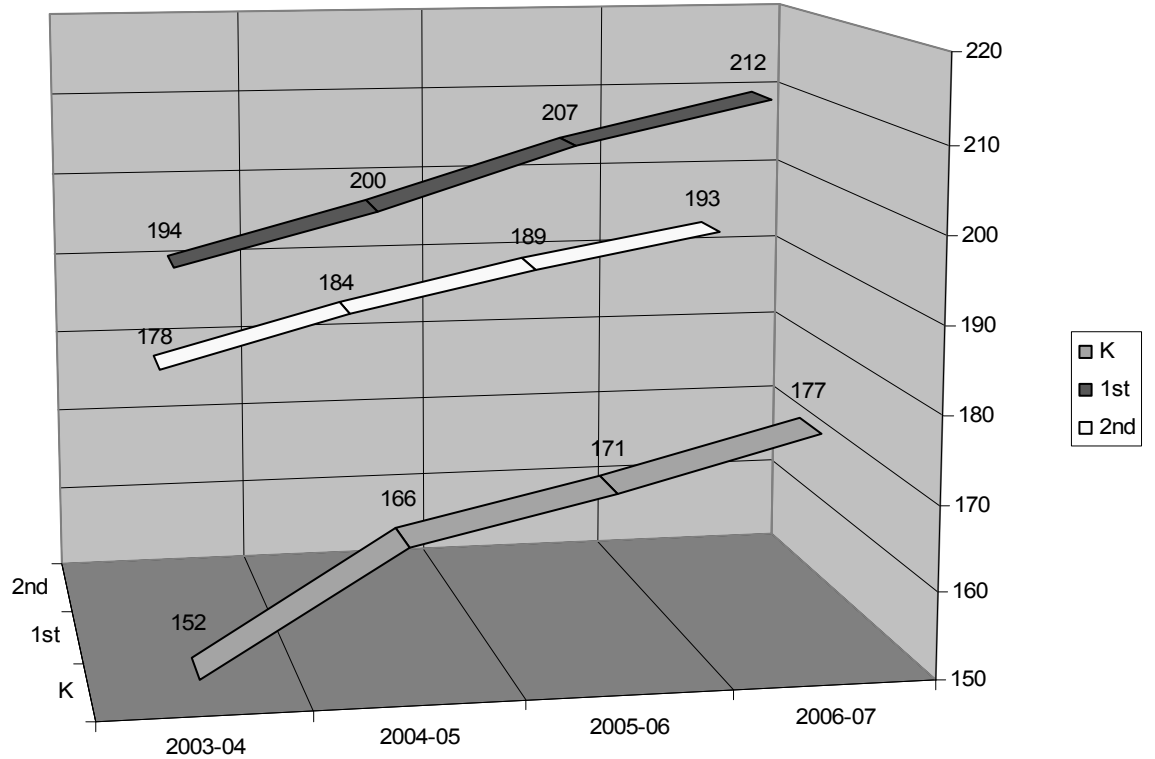
Enrollment by Grade as of 10/15/2003



Sample Projected Grade Growth

Using the Cohort Survival Method of statistical projection, which is considered more accurate than the various “simple” models, the district annually estimates future enrollment.

The chart below shows the anticipated growth of the current kindergarten, first, and second grades over the next three years. The current kindergarten, whose current size is 152 students, is expected to be 177 by the time they reach 3rd grade.



Enrollment Trend

The following chart shows actual enrollment figures from school years 1998-99 through 2003-04. Subsequent years use projected total enrollment based on the Cohort Survival Method. Against those figures, a 5 year moving average of the percentage of increase is also graphed. Notice the decline in the rate of growth of the student population.

